

# FALLS LAKE EXISTING DEVELOPMENT & AGRICULTURE REQUIREMENTS OVERVIEW

JANUARY 21, 2015

John Huisman – NC DWR

# Topics

- ◆ Existing Development Requirements
- ◆ Agriculture Requirements
- ◆ Agriculture Accounting Tools
- ◆ What is Development / What is Agriculture
- ◆ Questions / Follow-up Items

# Falls Lake Existing Development Rule Requirements

- ◆ All Local Governments in Watershed
  - ◆ Implement measures - reductions from existing developed land
  - ◆ Two Stages of Implementation
- ◆ Stage I : Back to 2006 baseline by 2020
- ◆ Stage II: 40% TN & 77%TP reduction goals by 2036
- ◆ Annual Reporting
- ◆ Implementation / Model Program Approval by EMC

# Falls Lake Agriculture Rule Requirements

- ◆ Reductions from Agriculture Operations
  - ◆ Row Crops & Pasture
  - ◆ Animal Threshold #'s
- ◆ Staged Collective Compliance Approach
  - ◆ Stage I: 20% TN & 40%TP by 2020
  - ◆ Stage II: 40% TN & 77% TP by 2035
- ◆ Formation of Watershed Oversight Committee
  - ◆ Implementation and Annual Reporting

# EMC Approved Agriculture Accounting tools

- ◆ Cropland Nitrogen Loss – NLEW Tool
- ◆ Phosphorus Loss – Qualitative
- ◆ Pastureland Nitrogen Loss – Point System
  
- ◆ Accounting is “Edge of Field”
  
- ◆ Annual Progress Reports
  - ◆ Submitted to DWR
  - ◆ Presented to EMC

# What is Existing Development

- ◆ Existing Development Defined in Rule
  - ◆ Built before Implementation of New Development Req.
  - ◆ Vested projects
- ◆ Land Cover
  - ◆ Includes impervious and managed pervious covers
  - ◆ Includes developed land w/ tree canopy
- ◆ Development Types
  - ◆ Residential, commercial, industrial, institutional
  - ◆ Public & Private (State/Federal has own rule)

# Not Existing Development Agriculture and Forest Exclusions

- ◆ Agriculture Land – Not Existing Development
  - ◆ Ag Defined by Rule
  - ◆ Commercial Production
  - ◆ Livestock & Poultry - Animal Threshold #'s
- ◆ Forest Land – Not Existing Development
  - ◆ Land with tree canopy and vegetated understory
  - ◆ Not maintained

# QUESTIONS?

John Huisman - NC Division of Water Resources  
Nonpoint Source Planning Unit

[John.Huisman@ncdenr.gov](mailto:John.Huisman@ncdenr.gov)

919-807-6436

DWQ Falls Lake Website: <http://www.fallslake.org>





# SLIDES IN RESERVE

SLIDES IN RESERVE



# Existing Development Model Program

- ◆ Guide to help affected parties meet rule implementation requirements
- ◆ Part I: Model Program
  - ◆ Outlines structure & elements for affected parties to include in their program submittals
- ◆ Part II: Companion Document
  - ◆ Supporting information and guidance for affected parties

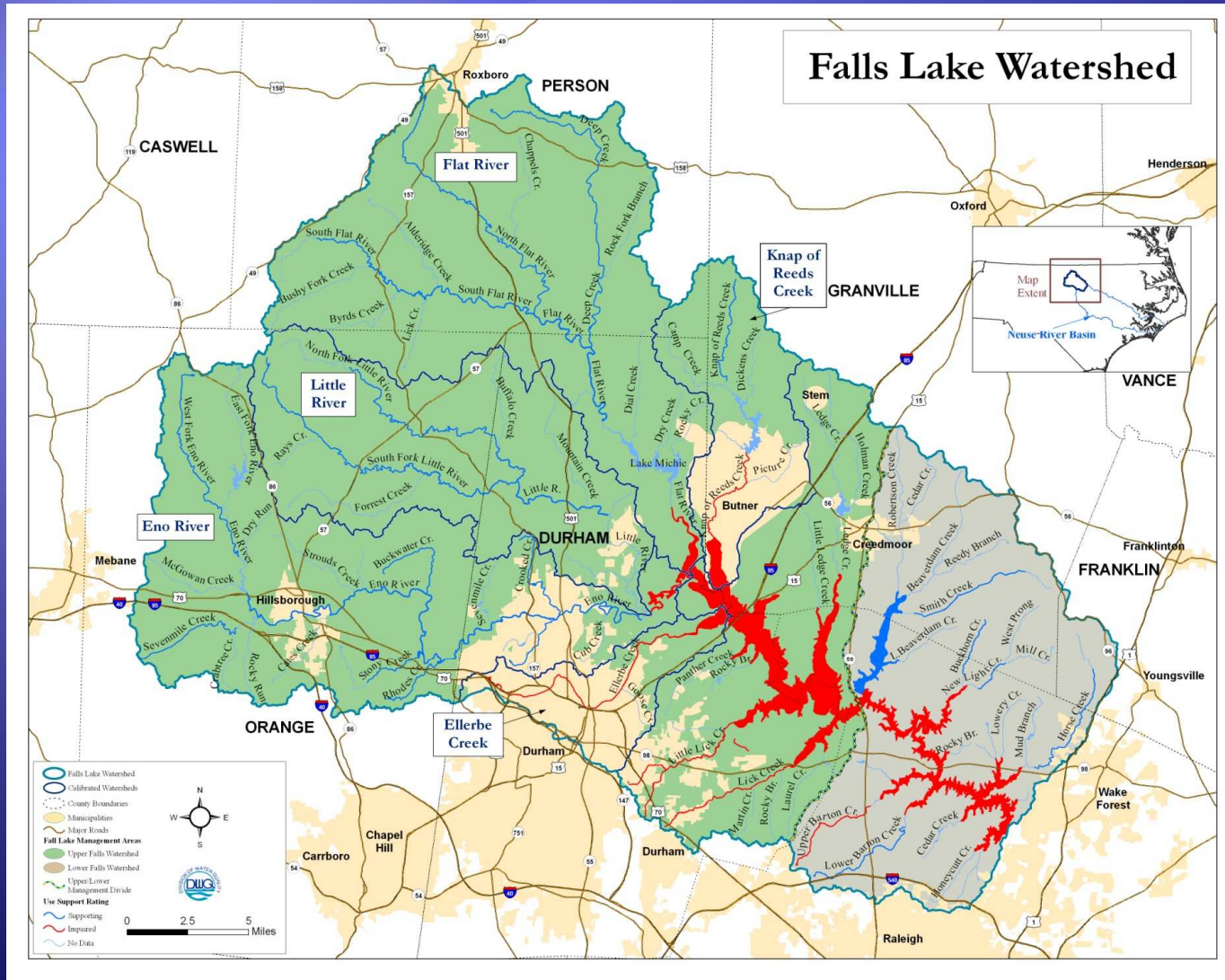
# Part I: Model Program

- ◆ Local Program Template
  - ◆ Information required for EMC approval
- ◆ Methods to Quantify Load Reduction Needs
  - ◆ Nutrient Accounting Tool
- ◆ Onsite Accounting
  - ◆ Failing Septic & Discharging Sand Filters
- ◆ Available Nutrient Measures

# Part II. Companion Document

- ◆ Terms & Concepts
- ◆ Key Rule Requirements
- ◆ Adjusting Allocation & Reduction Needs
- ◆ Addition of Nutrient Measures
- ◆ Trading
- ◆ Program Implementation & Annual Reporting
  
- ◆ Appendices
  - ◆ Rules / Session Law
  - ◆ Process for approving additional load reducing measures

# Falls Lake Watershed



# Agriculture Animal Thresholds

- ◆ Commercial Production of Crops
- ◆ Animal Thresholds
  - ◆ 5 or more horses
  - ◆ 20 or more cattle
  - ◆ 20 or more swine not kept in feedlot
  - ◆ 150 or more swine kept in feedlot
  - ◆ 120 or more sheep
  - ◆ 130 or more goats
  - ◆ 650 or more turkeys
  - ◆ 3,500 chickens
  - ◆ Other livestock that exceeds 20,000 lbs live weight