

UNRBA PFC Meeting

# MRS Project Status Update

September 27, 2017



# Year 1 Wrap Up

September 2017

# Modeling Quality Assurance Project Plan

- MRSW received a final draft for review on September 22<sup>nd</sup>
  - Most revisions had been reviewed and approved by the MRSW previously
  - Updated the Service Provider and Modeling Team
  - Addressed latest round of comments from DWR

# Revisions in Response to DWR Comments

- Code revisions will be documented
- Performance criteria will be evaluated at individual stations and as a composite for comparison to DWR statistics
- For extreme hydrologic conditions, performance criteria may be relaxed
- Lake calibration will focus on DWR monitoring stations with data collected by other organizations used as supplemental data for model development and calibration as needed

# Modeling Quality Assurance Project Plan

- Executive Director requested comments from the MRSW by today
- Would like to submit Modeling QAPP to DWR soon

MRSW/PFC Discussion

# Year 2 Ramp Up

September 2017

# Contract Overview for Year 2

- Shortened contract period to align with fiscal year (September 20, 2017 – June 30, 2018)
- Budget: \$282,200
- Modeling Team includes
  - Brown and Caldwell
  - Systech Water Resources
  - Dynamic Solutions
  - Independent Consultants/Subject Matter Experts
- Seven tasks

# Section 9: Project Communication and Chain of Command

- Contract acknowledges that UNRBA is comprised of 15 members with different and shared concerns
- Contractor must perform Work to the benefit of all members
- The UNRBA has designated the Executive Director as the sole contact for the Work
- Implementation of the Protocol
  - All communications between the Contractors and members about the Work (or related issues) should include the Executive Director (calls, meetings, email copies)
  - Exceptions include the request for, or transfer, of data



## **Task 201 – Data Acquisition and Management**

- Develop and distribute a data acquisition form
- Develop a data management plan for the project

## **Task 202 – Coordination with Stakeholders to Acquire Data**

- Compile public and private datasets for model development
- Document QA/QC procedures
- Two stakeholder workshops (fall and spring)
- Calls and meetings with stakeholders to facilitate data transfer

## **Task 203 – Preliminary Model Configuration**

- Develop modeling grid for the hydrodynamic lake model and lake segments for simpler models
- Delineate subwatersheds and develop stream network for the watershed model
- Technical memorandum to describe gridding and segmentation

## **Task 204 – Review/ Recommendations on Monitoring Program**

- Modeling Team to review the Annual Report generated under the Monitoring Program
- Provide recommendations on the need for a 5<sup>th</sup> year of monitoring
- Technical memorandum

## **Task 205 – Update the Multi-Year Work Plan**

- Update the multi-year work plan that describes the future years of the modeling and regulatory support project
- Incorporate latest legislative changes, input from the UNC Nutrient Study, etc. into schedule and approach

## **Task 206 – Regulatory Support/Coordination with Communications Team**

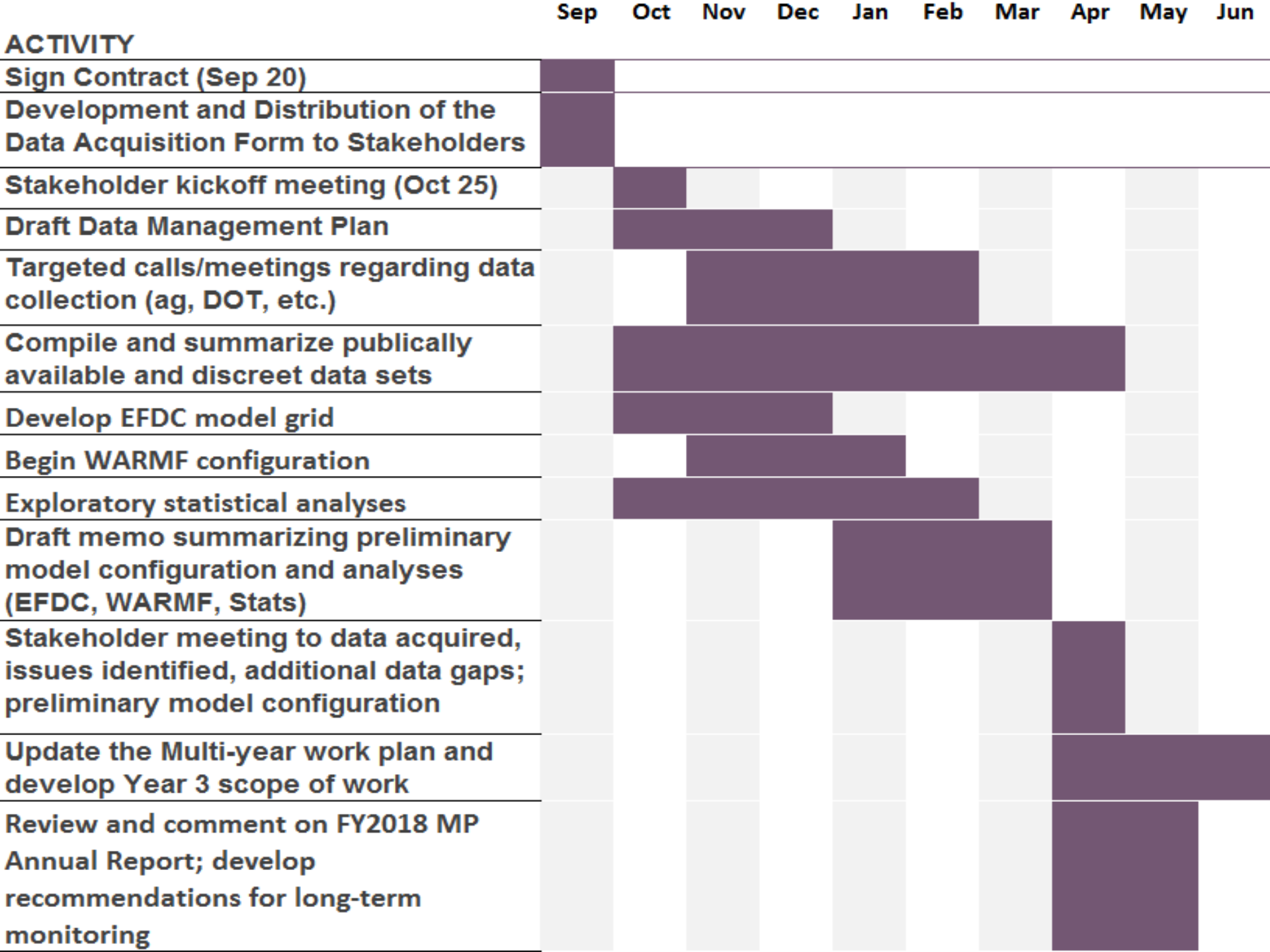
- Support the UNRBA in their preparation and planning for meetings with agency staff and other stakeholders that may affect the reexamination
- Coordinate with the UNRBA Communications Team to ensure consistency among work products

# **Task 207 – Routine Communications and PM**

- Status updates at PFC and BOD meetings
- Calls with the Executive Director and UNRBA Subject Matter Experts
- Calls/meetings with the MRSW
- Project management

# Budget for Year 2 of the MRS Program

Task	Budget
Task 201: Data Acquisition Management	\$28,500
Task 202: Coordination with Stakeholders to Acquire Data	\$69,800
Task 203: Preliminary Model Configuration	\$85,000
Task 204: Review/Recommendations on Monitoring Program	\$22,800
Task 205: Update Multi-Year Work Plan	\$21,800
Task 206: Regulatory Support and Coordination with Communications Team	\$27,700
Task 207: Routine Communications and Project Management	\$26,800
<b>Total</b>	<b>\$282,200</b>



# Preparations for Year 2 Stakeholder Meeting

# Format for Stakeholder Kickoff Meeting

- Open with UNRBA presentations to describe
  - Goals of the reexamination and why is it needed
  - Where we are in the process
  - Importance of stakeholder involvement
- Describe the WARMF watershed modeling
  - Types of data needed and how the model uses data
  - Interpretations and assumptions about the data



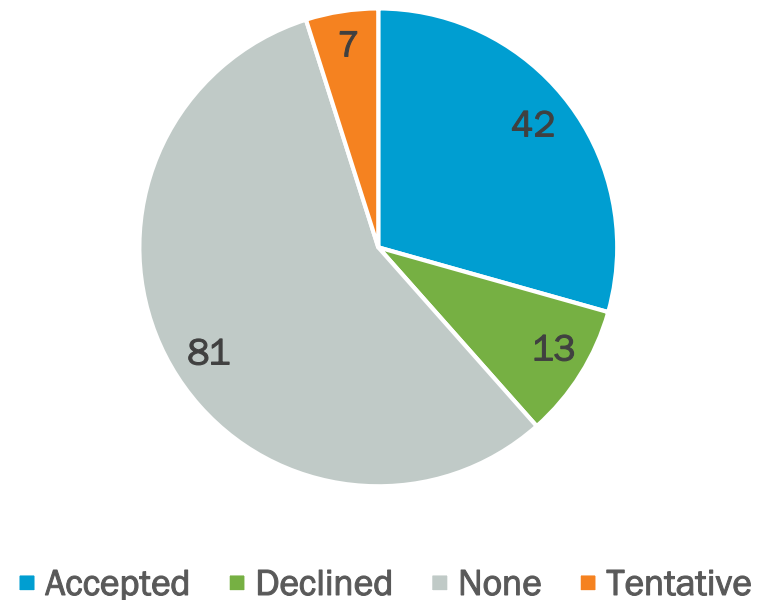
# Format for Stakeholder Kickoff Meeting

- Small group discussions (by sector or area)
  - What data is available and how long will it take to compile?
  - Who are the primary contacts?
  - What are the concerns about use of the data?
  - Lessons learned from similar projects?
  - Advice to other organizations for compiling data?
- Need volunteer note takers for each table

# Invitations and Planning

- “Save the Date” calendar invitations have been sent for October 25<sup>th</sup>, 9:30 to 12:30
- Developed a preliminary meeting plan with Andy Sachs (Board approved contract for facilitation of Year 2 Kickoff Meeting)
- Working with MRSW on agenda and meeting materials
- MRSW is reviewing the data acquisition form for distribution prior to the meeting

143 Invitations Sent



# Data Acquisition Form

# Purposes of the Form

- List types of data being requested by UNRBA
- Facilitate assignment of data contacts by members and stakeholders
- Provide information to the Modeling Team on the type and quantity of data to expect
- Facilitate tracking of data received and follow-ups

# Structure/Content of the Form

- Primary and follow-up contact information
- Types of relevant data (e.g., impervious cover, parcel, crop acres)
- Years data are available
- Format of data
- Spatial extent
- Resolution
- Metadata available?
- Anticipated delivery date to UNRBA
- Notes, concerns, lessons learned
- Other organizations that may provide duplicate data/collaborators on data collection

# Datasets Listed/Requested

- For the modeling years: 2005 – 2007, 2014 – 2018
  - Land Use/Land Cover (around the modeling period)
  - Nutrient management/application (urban and agricultural)
  - Wastewater discharges/biosolids application
  - Animal operations (kennels, horse farms, feeding operations)
  - Withdrawals and water quality data for impoundments
- Recent data: 2000 to present
  - Best management practices and structural control measures
  - Onsite wastewater disposal
- All available data:
  - Bathymetric data or stage-discharge/volume relationships for impoundments
  - Soils data

# Questions ?

