



UNRBA  
Modeling and  
Regulatory Support  
Board of Directors Meeting  
January 2017



January 18, 2017



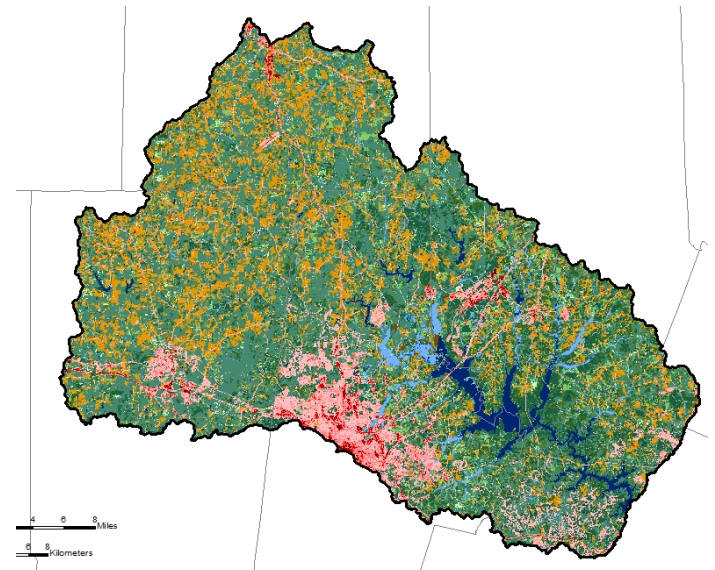
## Year 1 Goals for the Project

- ✓ > Project Kickoff Meeting on September 28<sup>th</sup> to engage stakeholders
- ✓ > Select modeling packages to support the reexamination
  - Watershed
  - Lake
- > Describe how multiple models will be used together
- > Develop a Modeling Quality Assurance Project Plan (QAPP)
- > Develop a two-year work plan (October 2017 through September 2019)



## Selection of the Watershed Model Package

- > WARMF (Watershed Analysis and Risk Management Framework)
- > Same package used by the State
- > City of Durham is currently revising for its subwatersheds
- > UNRBA will update for entire watershed
- > Supported by UNRBA Monitoring Program





## Selection of Two Lake Nutrient Response Model Packages

- > EFDC (Environmental Fluid Dynamics Code)
  - Same package used by the State to develop the Falls Lake Nutrient Management Strategy
  - UNRBA will update and revise based on UNRBA Monitoring Program
- > WARMF-LAKE (part of WARMF package)
  - Simpler model with faster model run times
  - Directly linked to the watershed model
  - Independent lake model to corroborate results
  - Supported by the UNRBA Monitoring Program

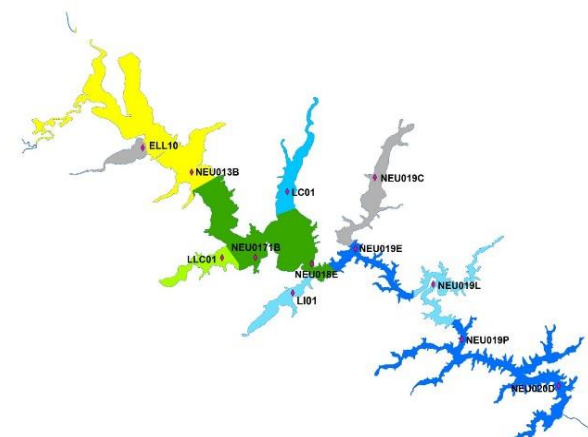


Figure from DEQ 2016 Falls Lake Status Report



## Development of the Designated Use Model

### > Statistical Model

- Data-driven mathematical relationships
- Supported by the UNRBA Monitoring Program
- Links water quality to designated uses
  - Aquatic life
  - Drinking water
  - Recreation
- Compare management strategies





## Optional Ecosystem Model

- > CASM Ecosystem Model
  - Simulates food web responses
  - Use output from EFDC
    - Hydrodynamics
    - Water quality
  - Predicts biomass of aquatic species
  - Investigating additional data requirements and costs





## Next Steps

- > Develop the conceptual modeling plan to explain how the models will work together
- > Begin drafting the modeling quality assurance project plan (QAPP)

