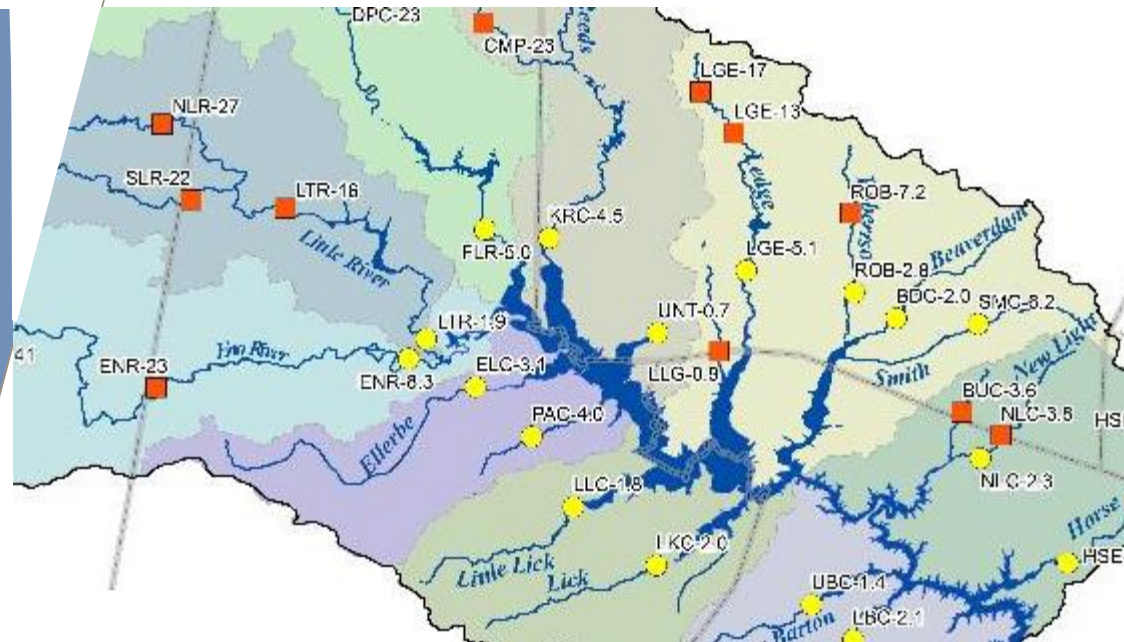


Monitoring Program Update

Path Forward Committee Meeting

February 2017





Routine Monitoring – Data generation status

Date	Sample Collection	Sample Analysis	Data Review	Posted to Database
Aug-Dec 2014	✓	✓	✓	✓
Jan-Dec 2015	✓	✓	✓	✓
Jan-2016	✓	✓	✓	✓
Feb-2016	✓	✓	✓	✓
Mar-2016	✓	✓	✓	✓
Apr-2016	✓	✓	✓	✓
May-2016	✓	✓	✓	✓
Jun-2016	✓	✓	✓	✓
Jul-2016	✓	✓	✓	✓
Aug-2016	✓	✓	✓	✓
Sep-2016	✓	✓	✓	✓
Oct-2016	✓	✓	✓	✓
Nov-2016	✓	✓	✓	✓
Dec-2016	✓	✓	✓	
Jan-2017	✓	✓		
Feb-2017	✓			



Data from other organizations for 2016

For inclusion in 2016 annual report:

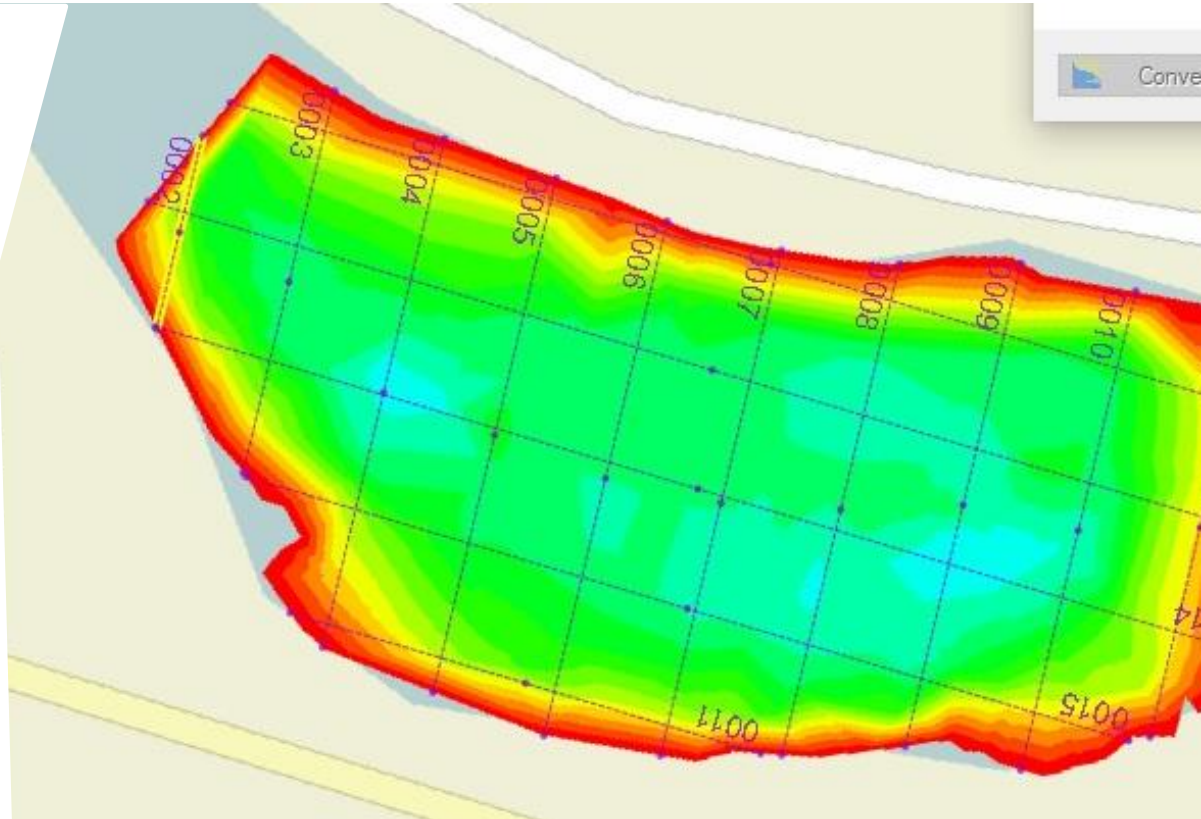
- NCSU - CAAE Lake Stations – **received**
- DWR Lake Stations – **received**
- DWR Algae – **received**
- City of Durham – **in preparation**
- DWR Stream stations - **not yet available**



*Environmental
Quality*

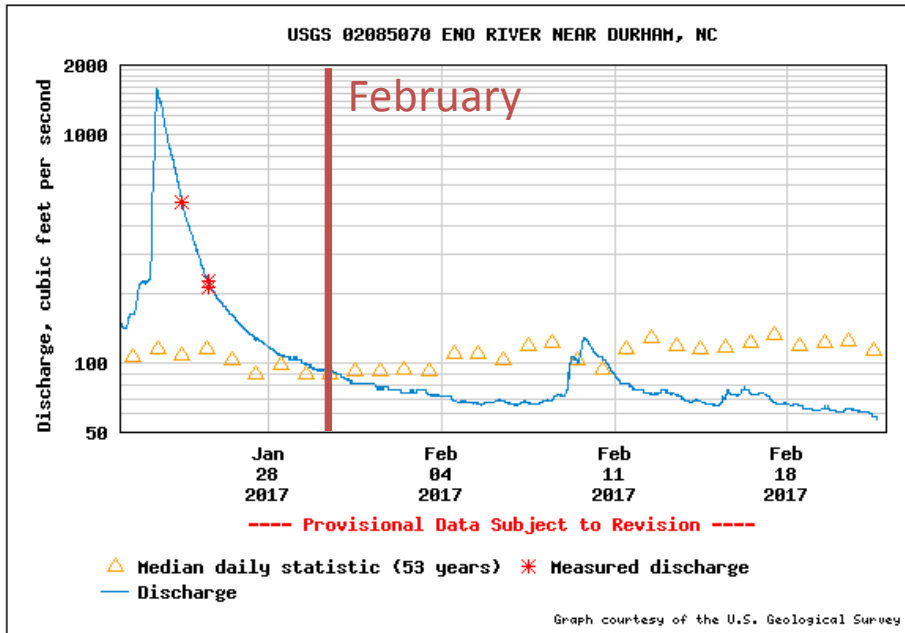


Special Studies Updates

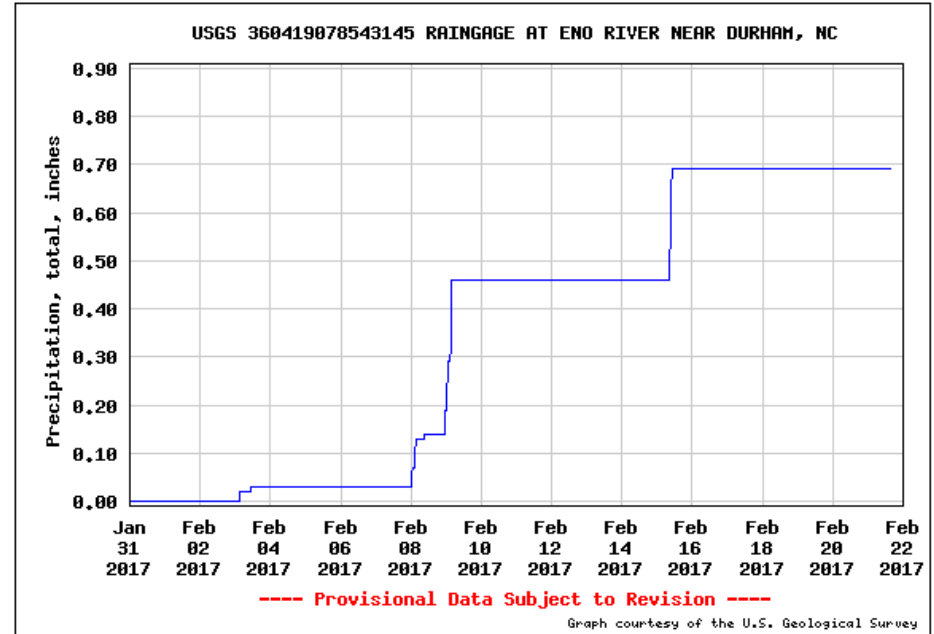




High Flow Sampling



So far no high flow events in February



Rain between 0.2 and 1.2 inches across the watershed, between 2-3 main events.



Bathymetry and Sediment Mapping

- Map the underwater topography for improved modeling of the retention and movement of water through the reservoir.
- Planned beginning March 6 (weather permitting)

