

Monitoring Program Update

Path Forward Committee

April 2017





Routine Monitoring – Data generation status

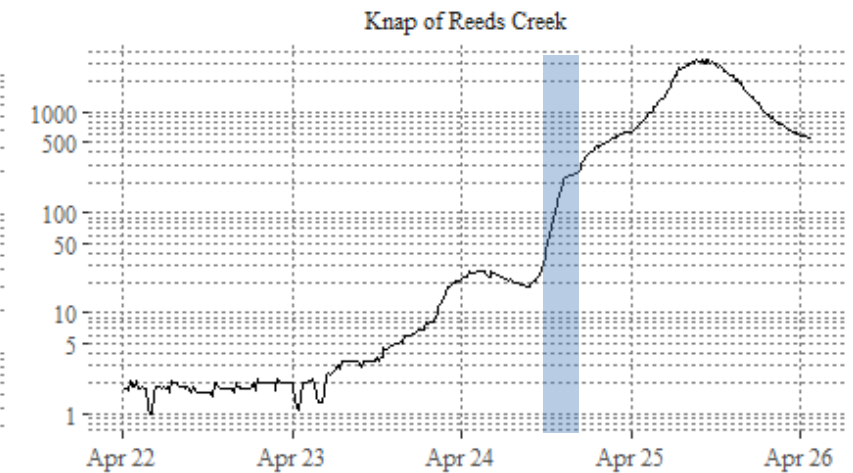
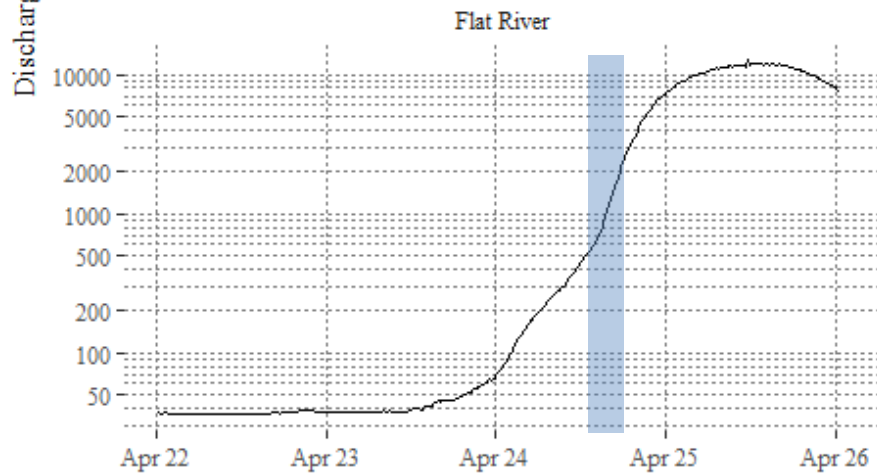
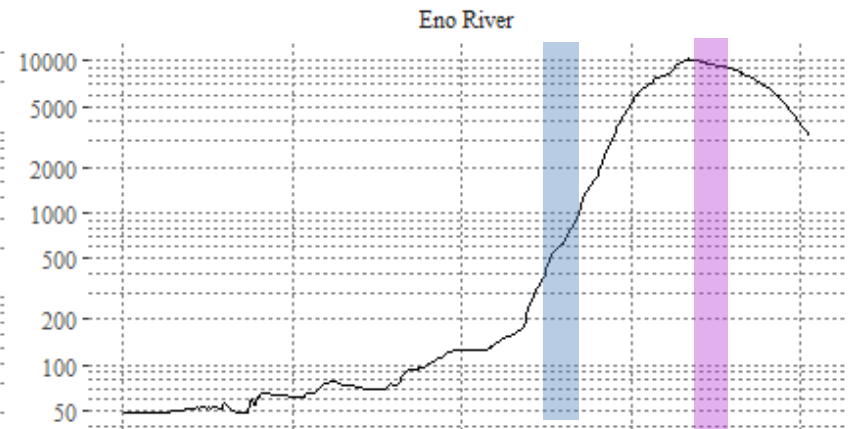
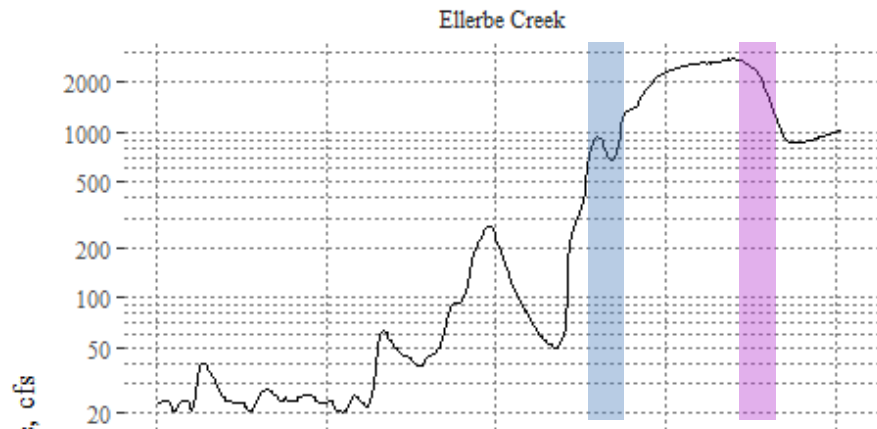
Date	Sample Collection	Sample Analysis	Data Review	Posted to Database
Aug-Dec 2014	✓	✓	✓	✓
Jan-Dec 2015	✓	✓	✓	✓
Jan-Dec 2016	✓	✓	✓	✓
Jan-2017	✓	✓	✓	
Feb-2017	✓	✓		
Mar-2017	✓	✓		
Apr-2017	✓			
May-2017				
Jun-2017				
Jul-2017				
Aug-2017				
Sep-2017				
Oct-2017				
Nov-2017				
Dec-2017				



High Flow Sampling

- > Collect water quality data when inflows to Falls Lake are high
- > April 23-25 Rainfall
 - > Upper watershed: 7-8 inches
 - > Lower watershed: 5-6 inches
- > Lake Level is up 7.5 feet *and rising*





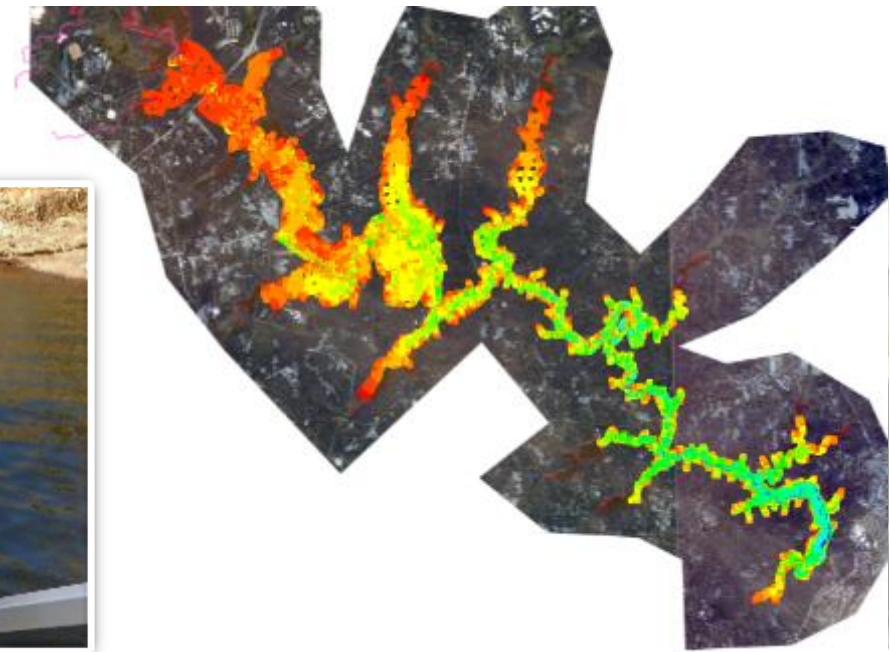
Date

Plus Little Lick, Lick, Upper and Lower Barton, Honeycutt, Ledge, Robertson, Beaverdam, and Smith.



Bathymetry and Sediment Mapping: Field Work Completed

- > Improve representation of the lake in the modeling
- > Started on March 6 & completed April 14.
- > Digitization and mapping are now underway





Annual Report

- Report has been drafted and is being reviewed (April 24)
- Report will be sent to PFC week of May 15 (prior to May PFC meeting)

Looking ahead to FY2018: Year 4

- Year 3 of monitoring will be completed at the end of July 2017
- Three full growing seasons will be completed in October 2017
- Propose to continue routine monitoring through Year 4
- **Special Studies**
 - Proposed continuation of high flow sampling in Year 4 (reduced budget)
 - No other special studies planned or proposed

